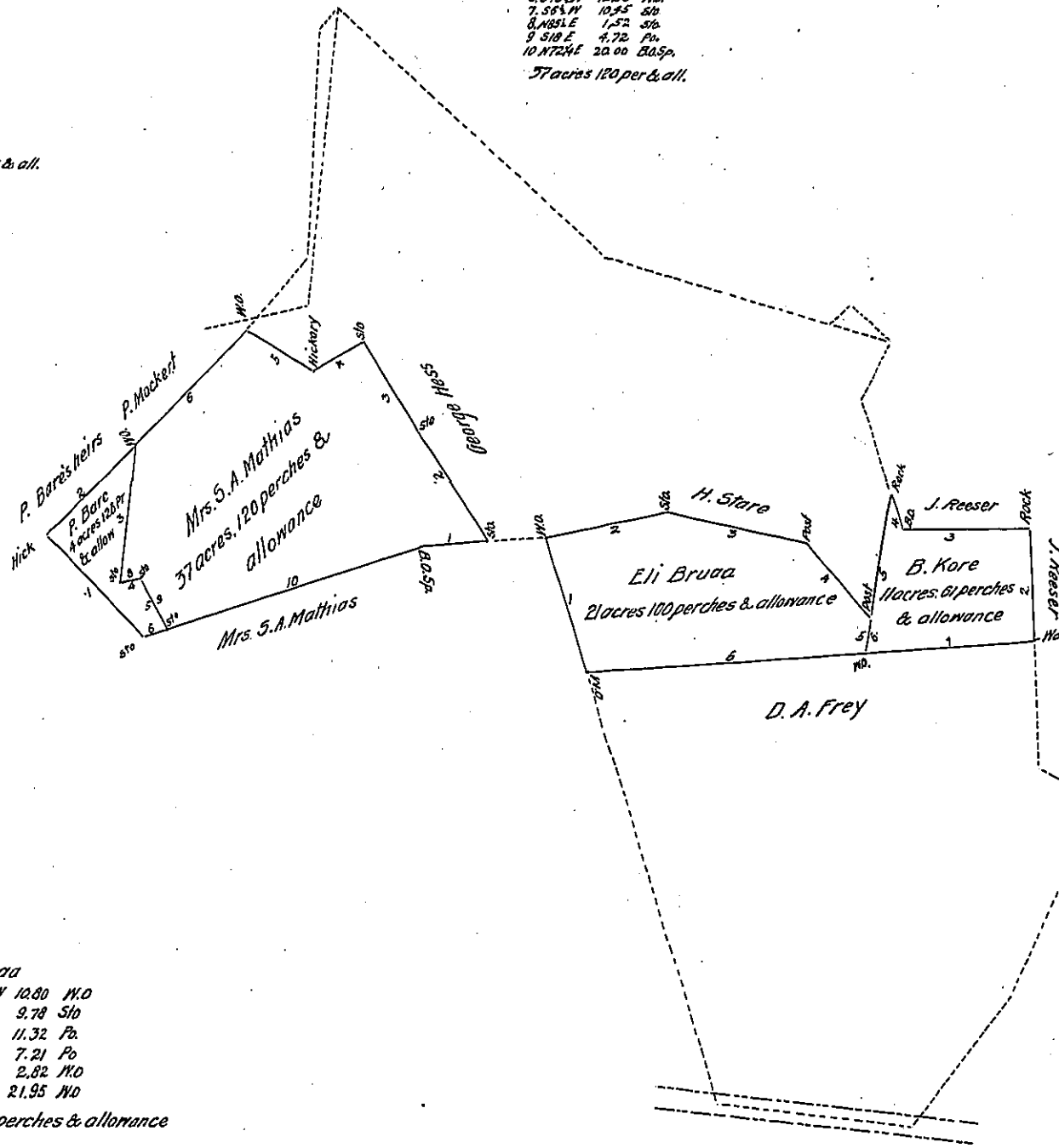


*Peter Bare*  
 1 N11W 11.31 Hic  
 2 N46E 9.74 N10  
 3 S61W 10.43 S10  
 4 N45E 1.52 S10  
 5 S18 E 4.72 P10  
 6 S72W 1.43 S10  
 4 acres 126 perches & all.

*Mrs. S. A. Mathias*  
 1. N88E 6.10 P10  
 2. N34W 10.22 S10  
 3. N30W 8.10 S10  
 4. S60W 4.30 N10  
 5. N60W 6.59 N10  
 6. S45W 12.04 N10  
 7. S65W 10.95 S10  
 8. N85E 1.52 S10  
 9. S18 E 4.72 P10  
 10. N72W 20.00 B10  
 37 acres 120 per & all.



*Eli Bruua*  
 1 N15 3/4 W 10.80 N10  
 2 N80 E 9.78 S10  
 3 S. 76 1/2 E 11.32 P10  
 4 S 38 E 7.21 P10  
 5 S 4 1/2 W 2.82 N10  
 6 S 87 1/2 W 21.95 N10  
 21 acres 100 perches & allowance

*Benj Kore*  
 1. N87 1/2 E 13.37. Wall  
 2. N 1/2 E 9.17 Rock  
 3. West 10.28 B10  
 4. N15W 2.80 Rock  
 5. S 12 1/2 W 9.95 P10  
 6. S 4 1/4 W. 2.75 N10  
 11 acres 61 perches & allowa

Draft of four tracts of land situate in Housberry Township York County Pa. Being part of a larger tract surveyed to George Housberger in pursuance of an application granted to Martin Housberger dated June 16<sup>th</sup> 1768, T1P. 50.24. Surveyed September 25<sup>th</sup> 1827. Containing 75 acres 87 perches and allowance

*Wm S. Williams*  
 C.D.

IN TESTIMONY that the above is a copy of the original remaining on file in the Department of Internal Affairs of Pennsylvania, made conformably to an Act of Assembly approved the 16th day of February, 1833, I have hereunto set my Hand and caused the Seal of said Department to be affixed at Harrisburg, this twenty-seventh day of March 1906.

*Geo. P. Cannon*  
 Secretary of Internal Affairs.